



2025 Audition Music

# Concert Band

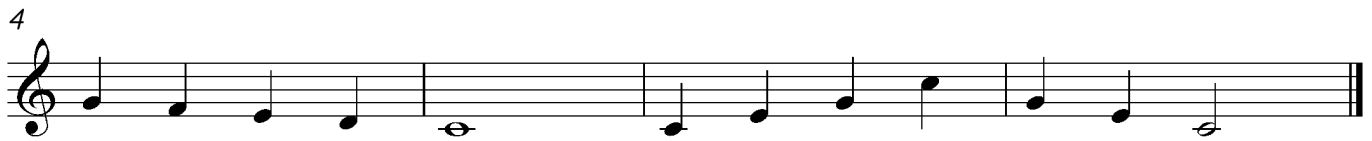
## Clarinet

Please prepare

- Scale and arpeggio below (choose either option A or B)
- Excerpt on next page
- 12-16 bars of own choice music. This could be a section of a longer piece you are working on, or two shorter pieces from your tutor book.

### Scale and Arpeggio A

♩ = 60



### Scale and Arpeggio B

♩ = 60



# Excerpt

♩ = 116

*f*

This block contains the first line of musical notation, measures 1 through 4. It is written on a single treble clef staff in 4/4 time with a key signature of one flat (Bb). The tempo is marked as quarter note = 116. The first measure starts with a quarter rest, followed by a quarter note G4, a quarter note F4, and a quarter note E4. The second measure consists of a quarter note D4, a quarter note C4, and a half note B3. The third measure starts with a quarter rest, followed by a quarter note G4, a quarter note F4, and a quarter note E4. The fourth measure consists of a quarter note D4, a quarter note C4, and a half note B3. A dynamic marking of *f* (forte) is placed below the first measure.

5

This block contains the second line of musical notation, measures 5 through 8. It is written on a single treble clef staff in 4/4 time with a key signature of one flat (Bb). The fifth measure consists of a quarter note G4, a quarter note F4, and a quarter note E4. The sixth measure consists of a quarter note D4, a quarter note C4, and a half note B3. The seventh measure consists of a quarter note G4, a quarter note F4, and a quarter note E4. The eighth measure consists of a quarter note D4, a quarter note C4, and a half note B3.

9

*ff*

This block contains the third line of musical notation, measures 9 through 12. It is written on a single treble clef staff in 4/4 time with a key signature of one flat (Bb). The ninth measure consists of a quarter note G4, a quarter note F4, and a quarter note E4. The tenth measure consists of a quarter note D4, a quarter note C4, and a half note B3. The eleventh measure consists of a quarter note G4, a quarter note F4, and a quarter note E4. The twelfth measure consists of a quarter note D4, a quarter note C4, and a half note B3. A dynamic marking of *ff* (fortissimo) is placed below the eleventh measure, and an accent (>) is placed above the final note of the twelfth measure.